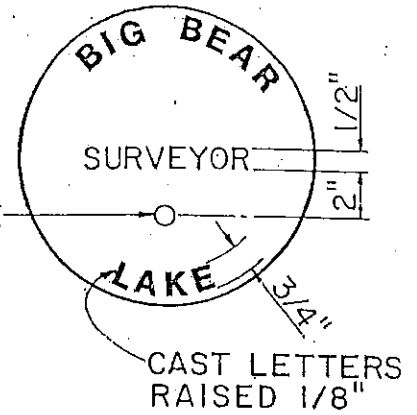


- NOTES:**
1. SURVEY MONUMENTS AND TIES SHALL BE PLACED AND A MAP OF SAME FILED WITH CITY ENGINEER PRIOR TO ACCEPTANCE OF IMPROVEMENTS.
  2. CENTERLINE TIES SHALL BE ON TRANSIT LINE THROUGH MONUMENT IF POSSIBLE.
  3. IF NO CURB EXISTS OR IS BEING CONSTRUCTED, THE SURVEYOR SHALL SET ANOTHER FORM OF TIE POINT IN LIEU OF LEAD AND TACK TO THE SATISFACTION OF THE CITY ENGINEER.

Revisions	CITY OF BIG BEAR LAKE		Standard Plan No.
4		CENTERLINE MONUMENTS AND TIES	
3			231
2		APPROVED	
1		<b>DRAFT</b>	
		16 OCT 89	

NAIL & TAG WITH R.C.E. OR L.S. NUMBER-2' FROM CENTER (TYP.)



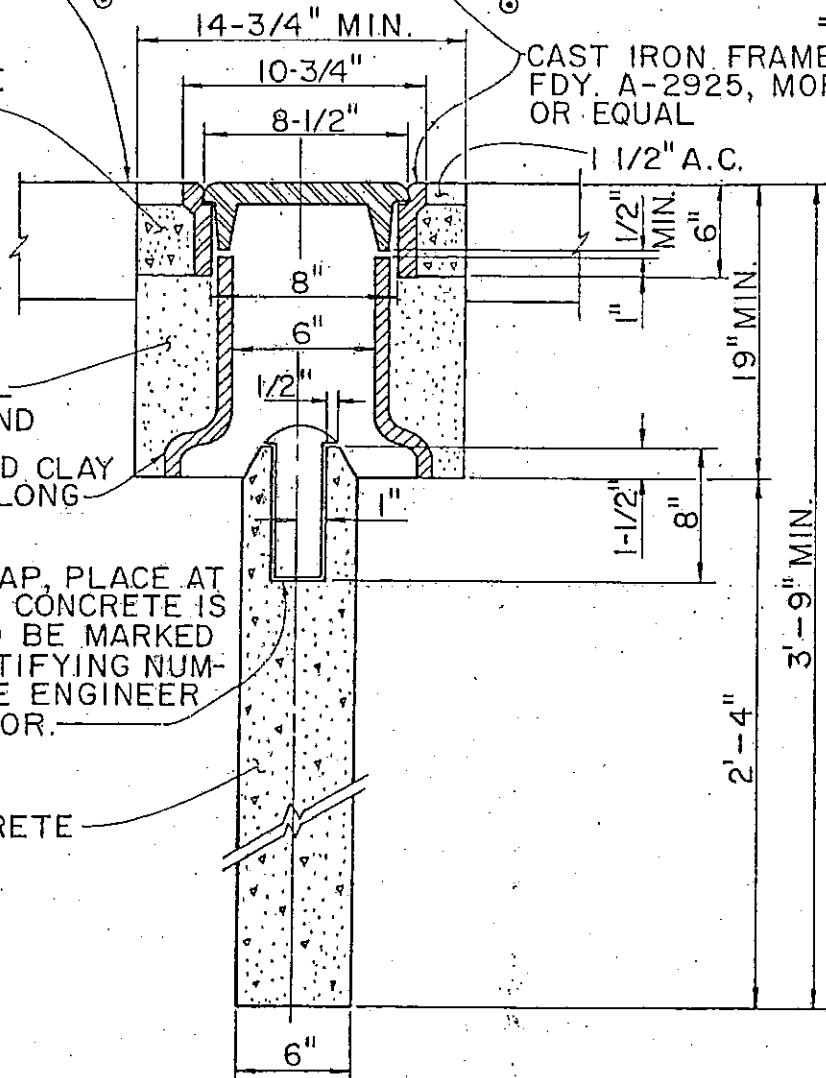
**TOP COVER**

FINISHED STREET PAVEMENT

CONCRETE COLLAR

CAST IRON FRAME & COVER PER ALH. FDY. A-2925, MORITZ FDY. M-1244 OR EQUAL

1 1/2" A.C.



BACKFILL WITH SAND

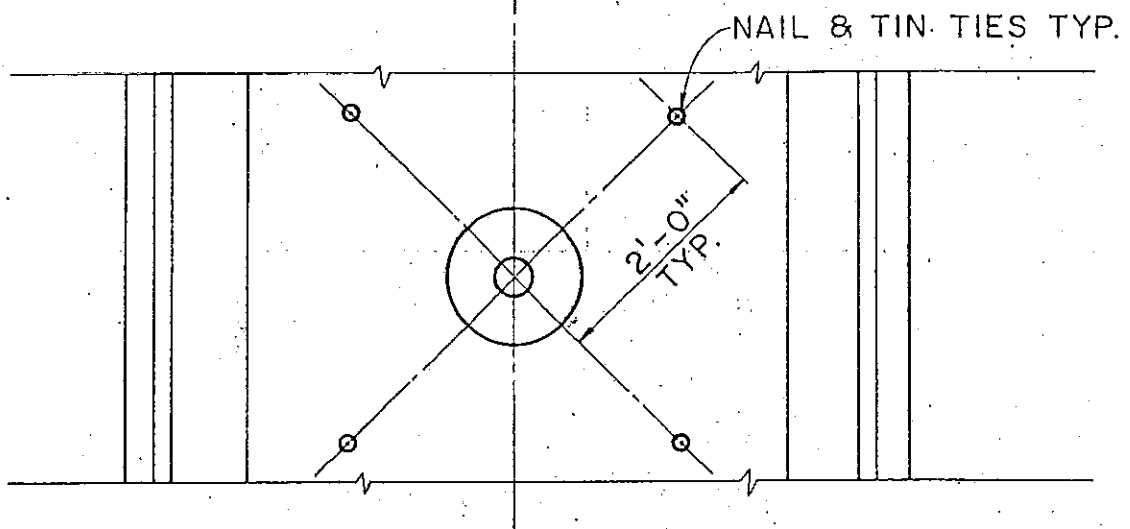
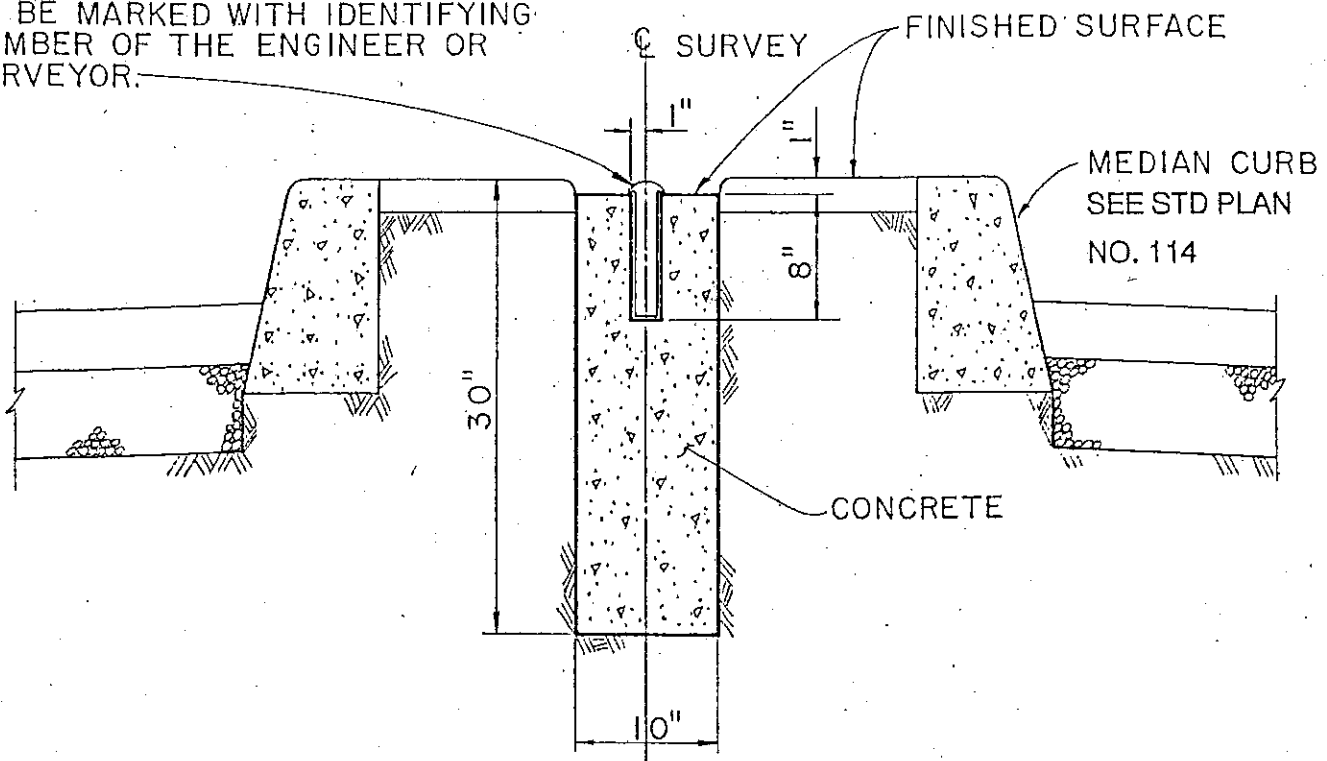
6" VITRIFIED CLAY PIPE 14" ± LONG

2" BRASS CAP, PLACE AT SAME TIME CONCRETE IS POURED. TO BE MARKED WITH IDENTIFYING NUMBER OF THE ENGINEER OR SURVEYOR.

CONCRETE

Revisions	CITY OF BIG BEAR LAKE	Standard Plan No.
4	SURVEY MONUMENT TYPE "A"	
3		232
2	APPROVED	
1		
<b>DRAFT</b>		16 OCT 89

2" BRASS CAP, PLACE AT SAME TIME CONCRETE IS POURED. TO BE MARKED WITH IDENTIFYING NUMBER OF THE ENGINEER OR SURVEYOR.



**NOTE:**  
 THIS TYPE OF MARKER TO BE INSTALLED ONLY IN SITUATIONS WHERE NO VEHICULAR TRAFFIC IS ANTICIPATED.

Revisions	CITY OF BIG BEAR LAKE	Standard Plan No.
4	SURVEY MONUMENT TYPE "B"	
3		233
2	APPROVED E	
1		
<b>DRAFT</b>		16 OCT 89