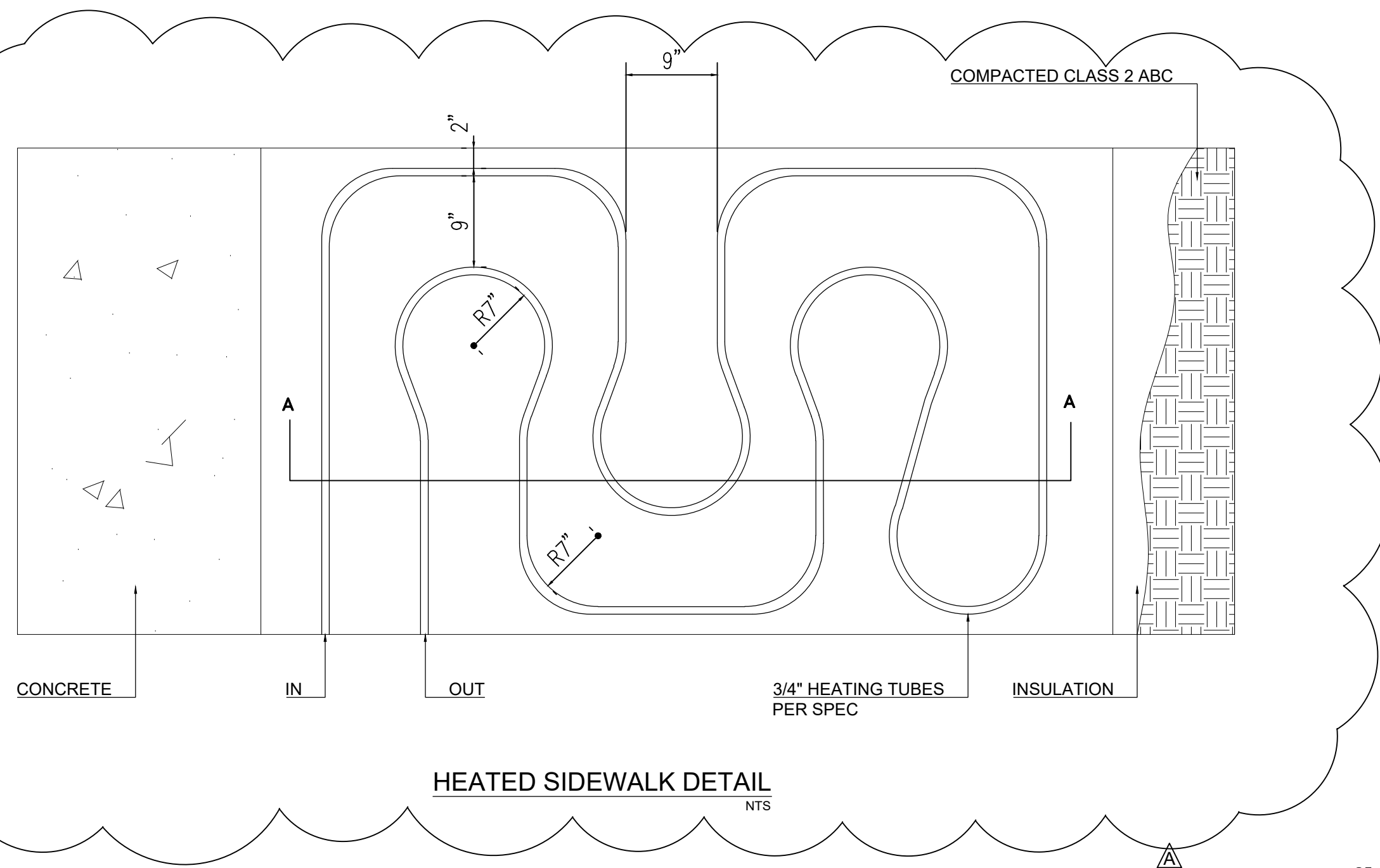


HEAT TUBE NOTES:

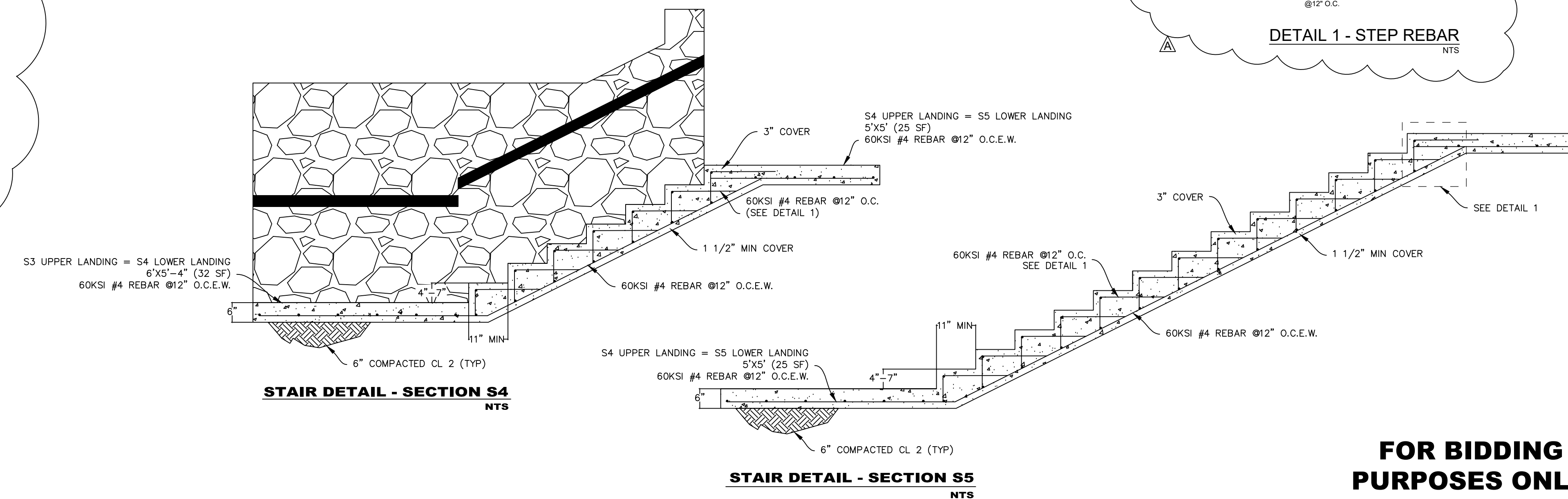
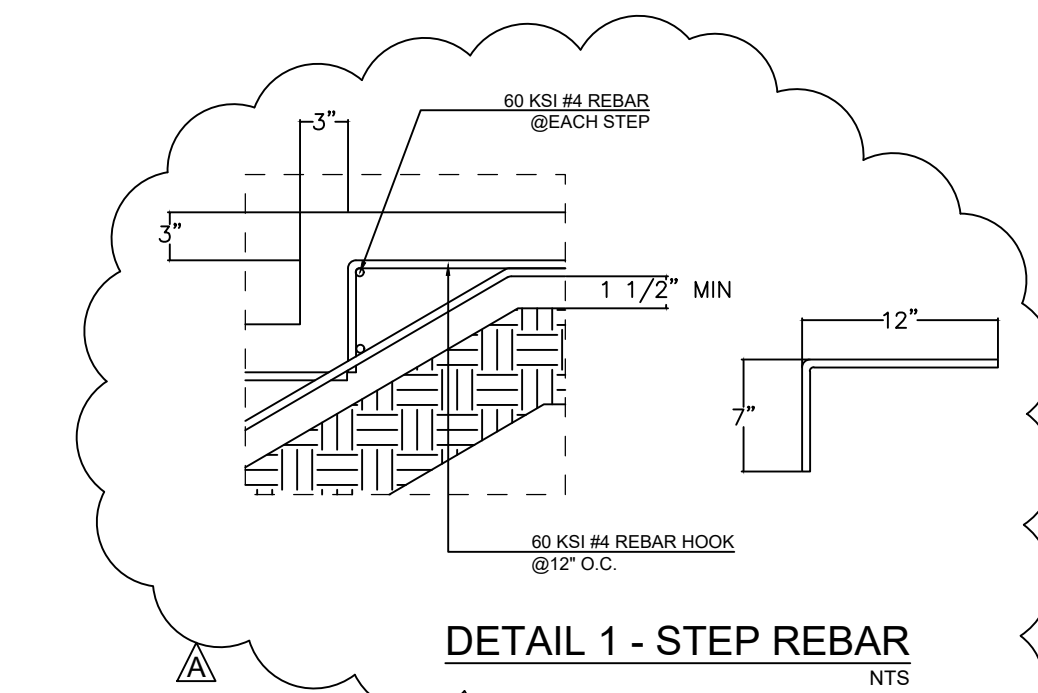
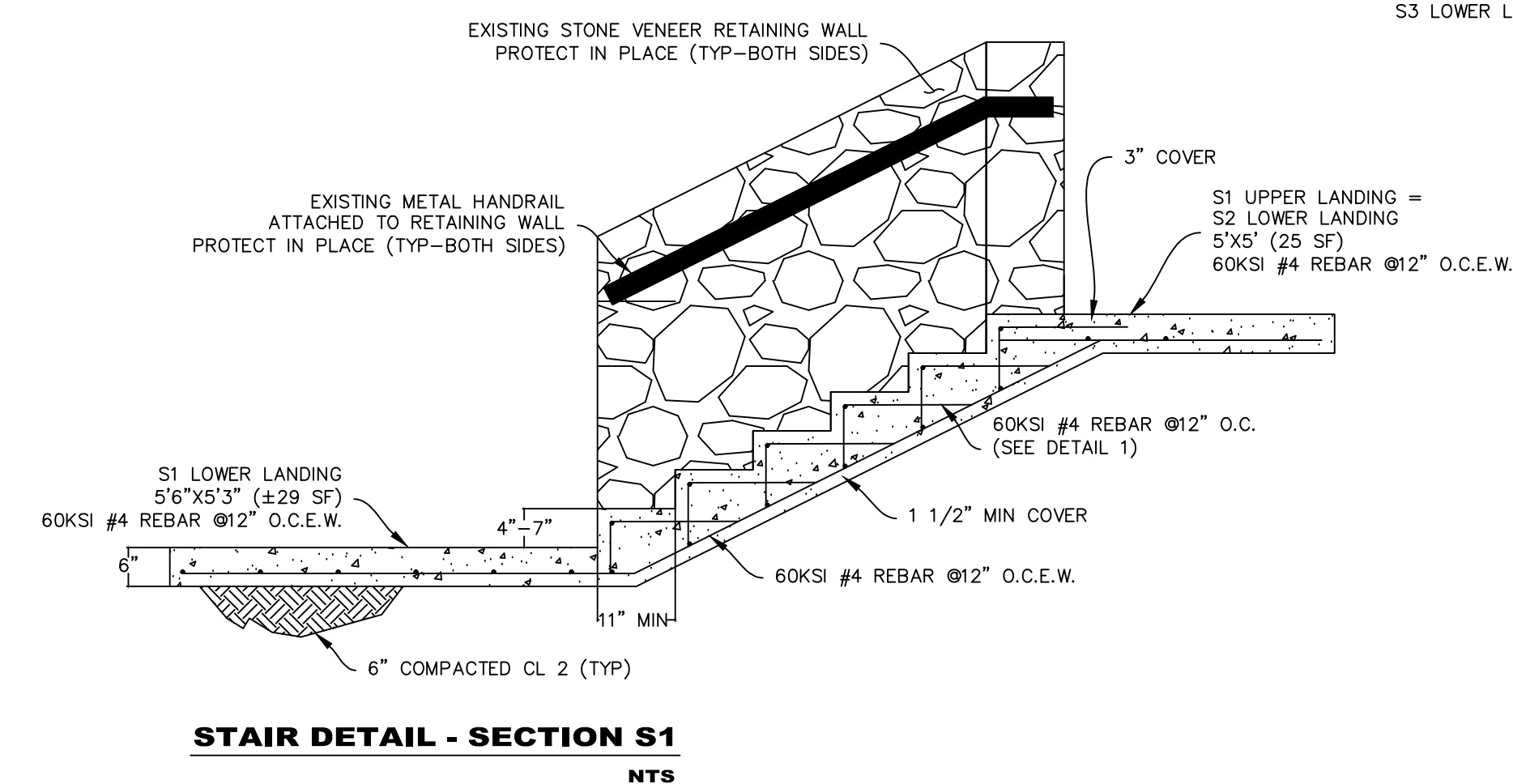
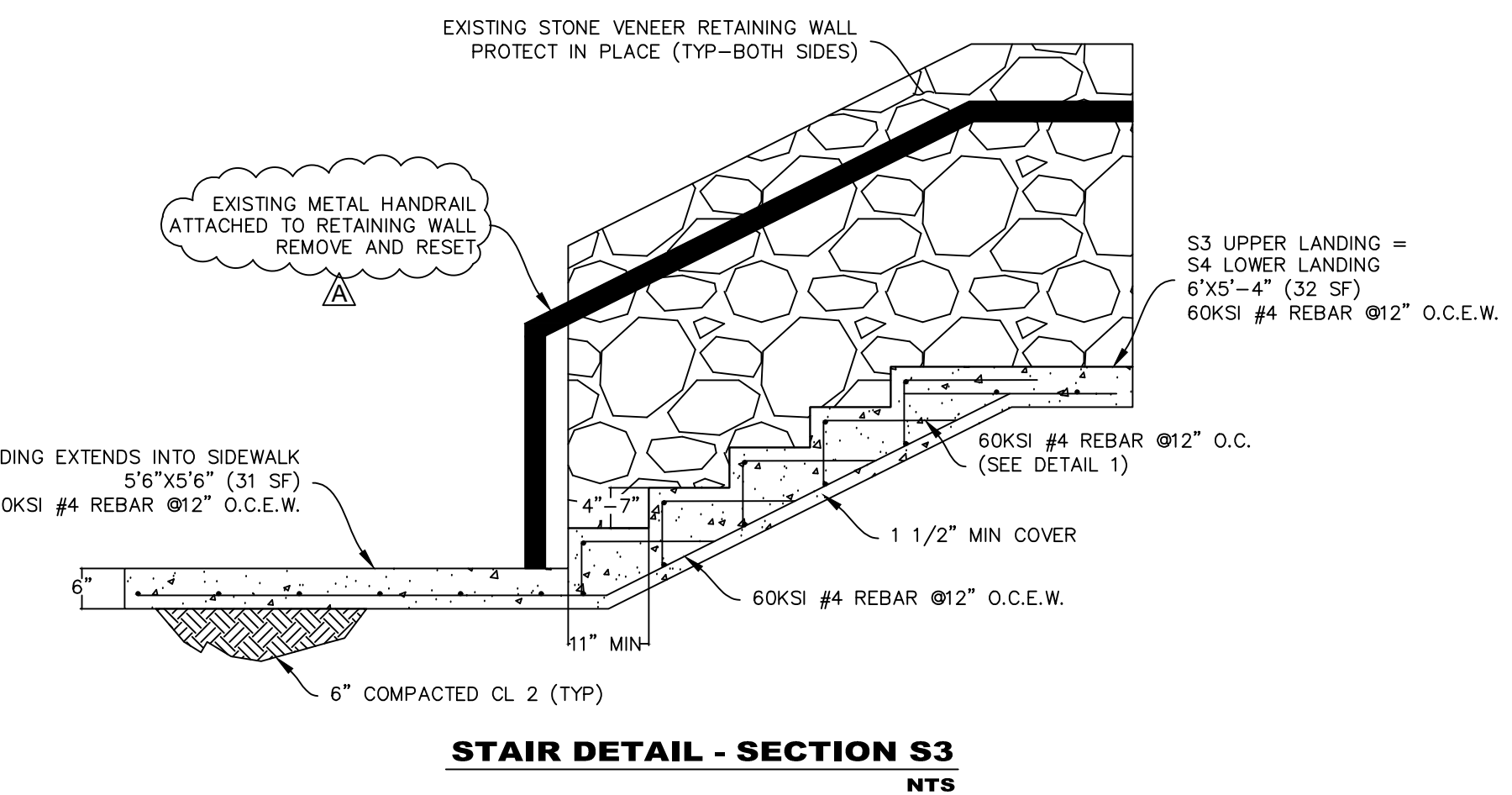
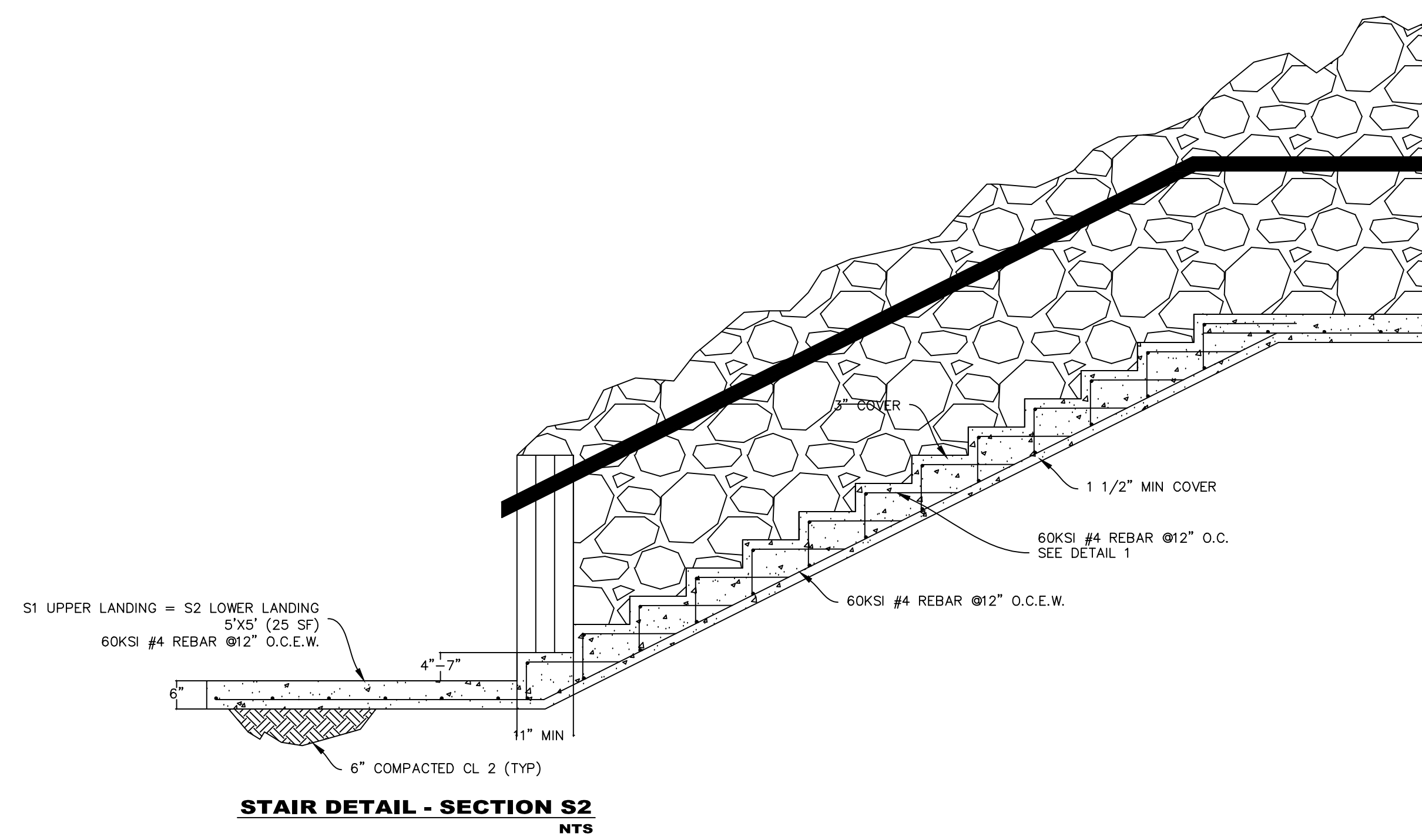
SIDEWALKS - 9" TUBE SPACING. 2" CLEAR SPACING

STAIRS - SUPPLY AT TOE. RETURN AT TREAD



CONCRETE NOTES:

MIN 28-DAY COMPRESSIVE STRENGTH - 3,250 psi
 SLUMP - 5"
 ENTRAINED AIR - 5%
 AGGREGATE SIZE - 3/4" SLABS & 3/8" STAIRS



CITY OF BIG BEAR LAKE
 BIG BEAR LAKE, CA
 39707 BIG BEAR BLVD.
 P.O. BOX 10,000
 BIG BEAR LAKE, CA 92315

**CIVIC CENTER ADA
 IMPROVEMENT PROJECT
 PHASE 2**

CONSTRUCTION DETAILS - SHEET 1

NO.	DATE	BY	CHKD	DESCRIPTION
1	05/17/19	JGR		DETAILS REVISED, DETAIL 1 ADDED

DATE: 03/18/2019
 JOB NO: 18.003
 DRAWN: JRH
 DESIGN: JRH
 CHECKED: RTH
 SCALE: NTS



**FOR BIDDING
 PURPOSES ONLY**
 NOT FOR CONSTRUCTION